

BITMOJI •

Skin Management Integrator 2.0 Pro

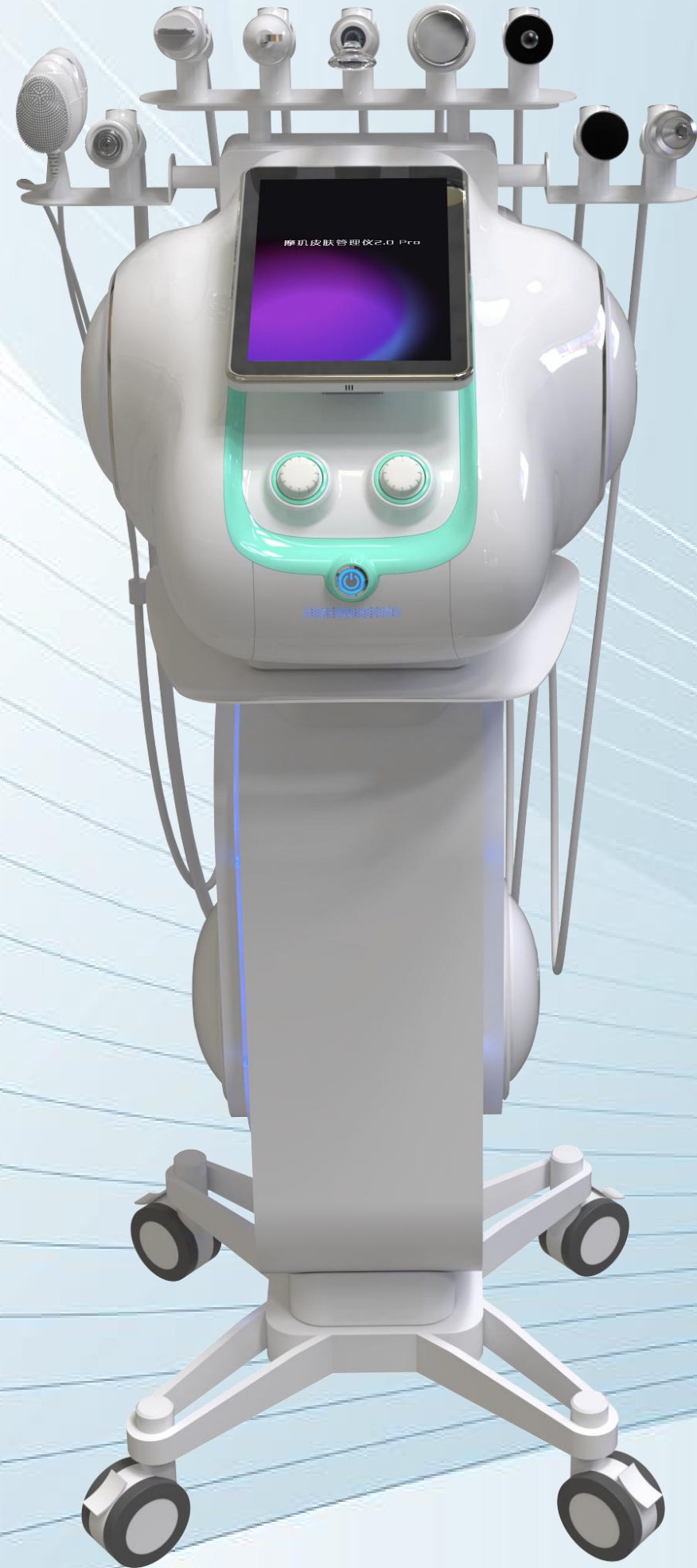


Shop space

Are you also worried about the single product in the store?

Are you still having a headache because the store is too small to accommodate too many instruments?

Have your employees also complained about the hassle of switching equipment for a project?



**Small volume, multi project,
multi-dimensional precision nursing**

One instrument complete

- ❑ Type cleaning and multi effect maintenance
- ❑ Skin brightening care, product introduction
- ❑ Eye care, muscle age maintenance

Safe

Are you also concerned about employees' improper handling of customer face care resulting in the following situation?

Are you still worried about the complexity of educating employees on nursing precautions?



A close-up photograph of a woman's face, looking directly at the camera. Her skin is clear and healthy. Overlaid on her face is a white, semi-transparent hexagonal grid pattern that resembles a honeycomb or a molecular structure. The background is a soft, light blue gradient with faint, curved lines. In the top left corner, there is a small orange triangle.

Take care of the integrity of the skin barrier

Considering customer experience and feelings

Based on skin physiology for research and development

Understand the physiological structure and characteristics of the skin

Material quality

Medical grade silicone material
Strong material stability and resistance to chemical reactions with cleansing products
Soft circular contact design
No friction when in contact with the skin, effectively avoiding redness and discomfort



Medical grade silicone material
Soft center contact design

Refuse skin damaging materials



Rough brush material can cause significant friction and redness when in contact with the skin
Some allergic skin may experience allergic reactions to fine hair materials



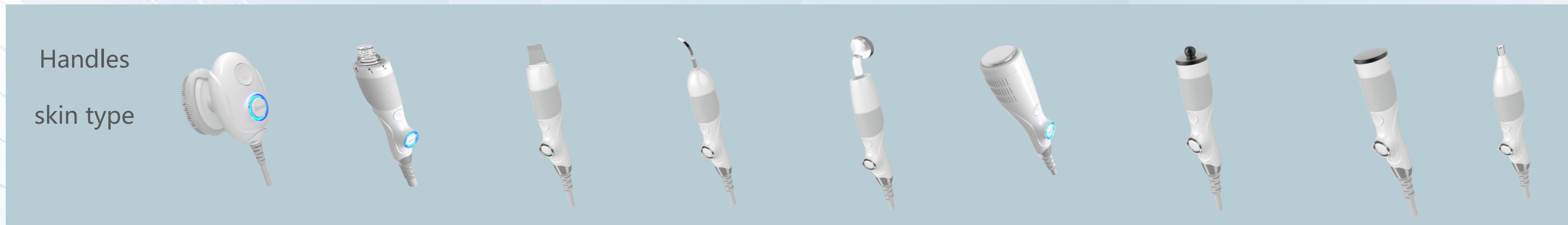
Poor quality silicone on the market can produce unpleasant odors and are prone to property changes

Control panel

Set appropriate gear by default based on skin type

Different skin types have varying strength tolerance

Therefore, the force used in setting each function should also be different



Handles skin type	Device 1	Device 2	Device 3	Device 4	Device 5	Device 6	Device 7	Device 8	Device 9
Dry Skin	2gear	adjustable	✘	2gear	✘	2gear	1gear	1gear	✘
Oily Skin	3gear	adjustable	2gear	2gear	1gear	3gear	2gear	2gear	1gear
Neutral Skin	2gear	adjustable	✘	1gear	✘	2gear	1gear	1gear	1gear
Mixed skin	2gear	adjustable	1gear	2gear	1gear	2gear	1gear	1gear	1gear
Sensitive skin	1gear	adjustable	✘	1gear	✘	3gear	1gear	1gear	✘

Function



Correctly understand the skin characteristics and the rationality of instrument functions

For oily and mixed skin with thick keratin, ultrasound handle can be used to exfoliate.

Limited use for fragile and sensitive skin and dry skin to avoid operator inexperience and incorrect selection of handles causing discomfort to customer skin

Time

Customized duration based on skin

The barrier of mixed, oily, and neutral skin is relatively sound, so the operating time will be correspondingly longer

Sensitive and dry skin with relatively weak keratin decreases in length to avoid causing skin discomfort and exacerbating sensitive reactions

Customized duration due to functionality

The total duration of the exfoliating function handle is limited to a short period of time, protecting the skin barrier.

The Ice extreme handle is designed to calm, soothe, and damage free with a longer total duration, accelerating skin redness

.....

The default duration and adjustable interval duration of each handle will take into account the characteristics of the skin and the functionality of the instrument

Collocation

Set based on skin structure zoning

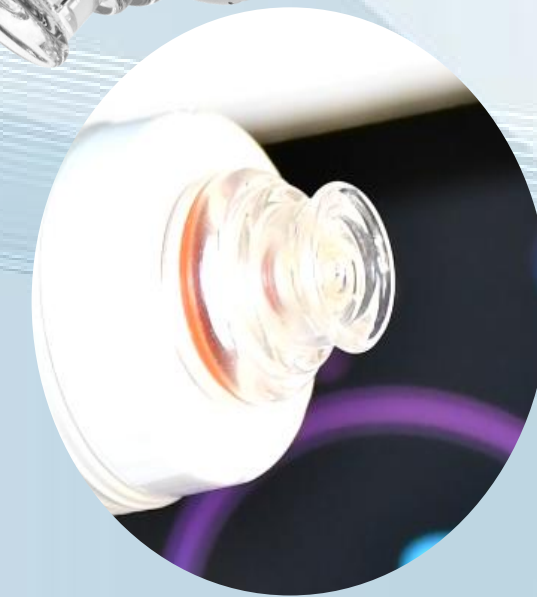
The pores on the cheeks have less accumulation of lipids and are difficult to repair after being pulled by external forces. Therefore, it is necessary to use tools with less suction to care for large pores.

There is a lot of lipid accumulation in the nose and it is easy to oxidize. Therefore, during care, it is necessary to use corresponding dilation force to remove dirt from the hair follicle funnel.

Product Matching by Skin Type

Neutral, dry, and sensitive skin is relatively fragile, so when cleaning, use products containing chamomile ingredients to reduce allergy rates

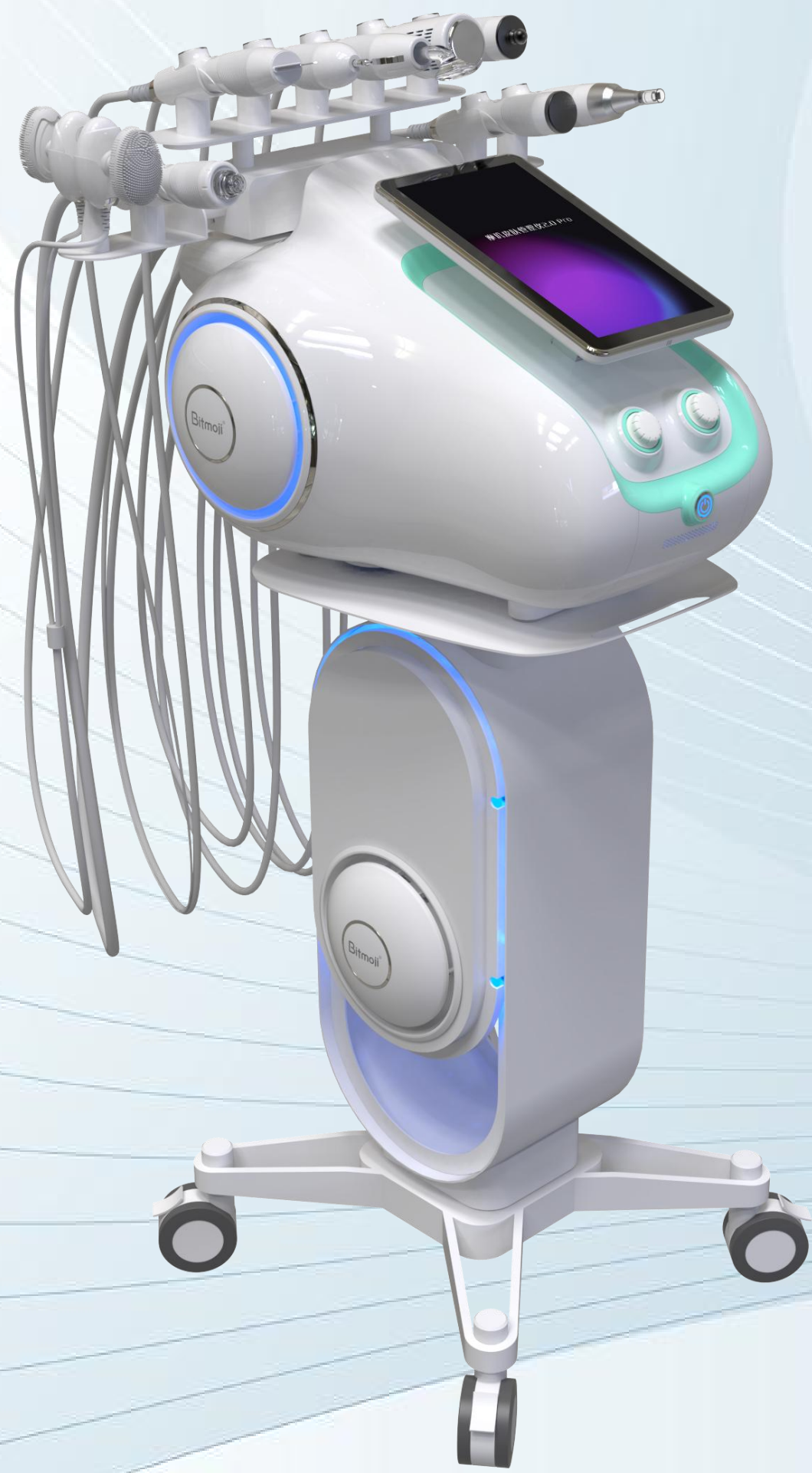
Mixed and oily skin produces more oil, so add a small amount of salicylic acid to control oil production



Cumbersome function

Are you also having a headache when choosing an instrument with too many handles to determine which functions you need?

Are you also skeptical about the functionality of the handles on the instrument?



Introduction to Handle Functions

Let every handle have evidence to follow

A. Multi frequency dual silicone handle

**Remove dirt from the surface of the skin,
replacing traditional hand cleansers**

Targeting the accumulation of dirt and scale in skin texture -
high-frequency vibration loosens dirt and cleans it more thoroughly

Medical grade silicone material -
soft and skin friendly, resistant to friction and redness

Different gear selection -
sensitive skin is gentle, oily skin is more powerful

Material, gear, vibration



Skin texture -
sulcus and mound



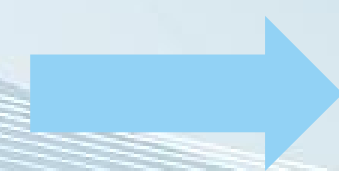
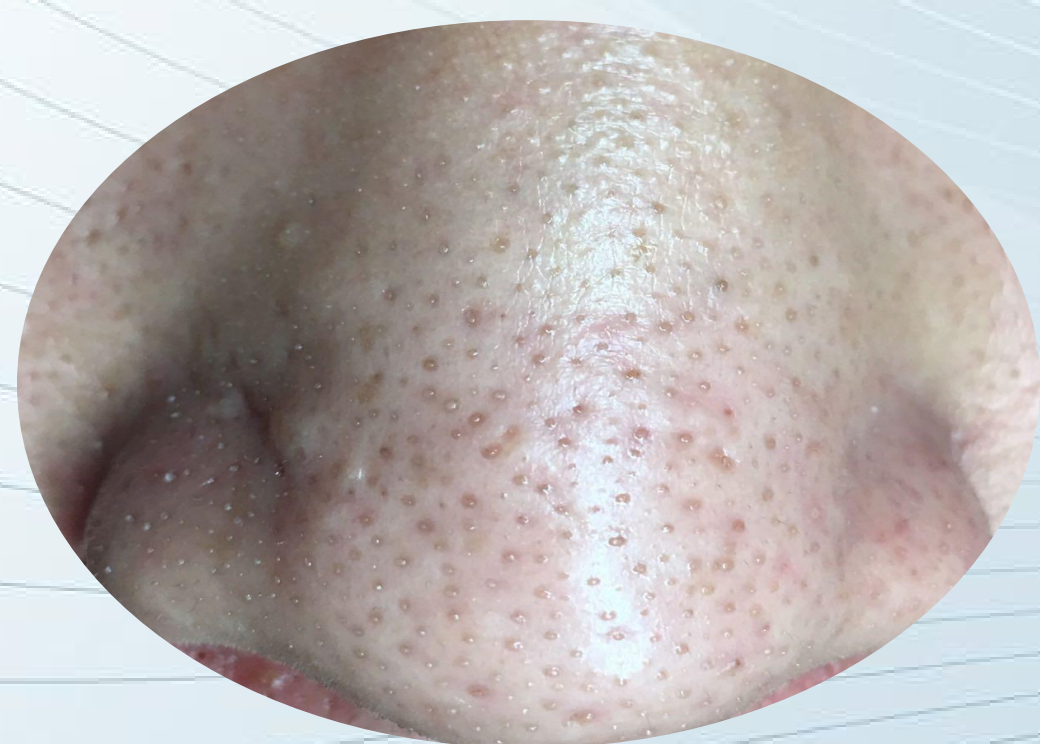
B.Vortex water carving handle

Suction • Zoning

Removing dirt from pores - dual head design

The pores on the cheeks have less accumulation of lipids and are difficult to repair after being pulled by external forces. Therefore, it is necessary to use tools with less suction to care for large pores

There is a lot of lipid accumulation in the nose and it is easy to oxidize. Therefore, during care, it is necessary to use corresponding dilation force to remove dirt from the hair follicle funnel



B.Vortex water carving handle

Product • Typing

Removing dirt from pores - product matching based on skin type

Neutral, dry, and sensitive skin is relatively fragile, so when cleaning, use products containing chamomile ingredients to reduce allergy rates

Mixed and oily skin produces more oil, so add a small amount of salicylic acid to control oil production

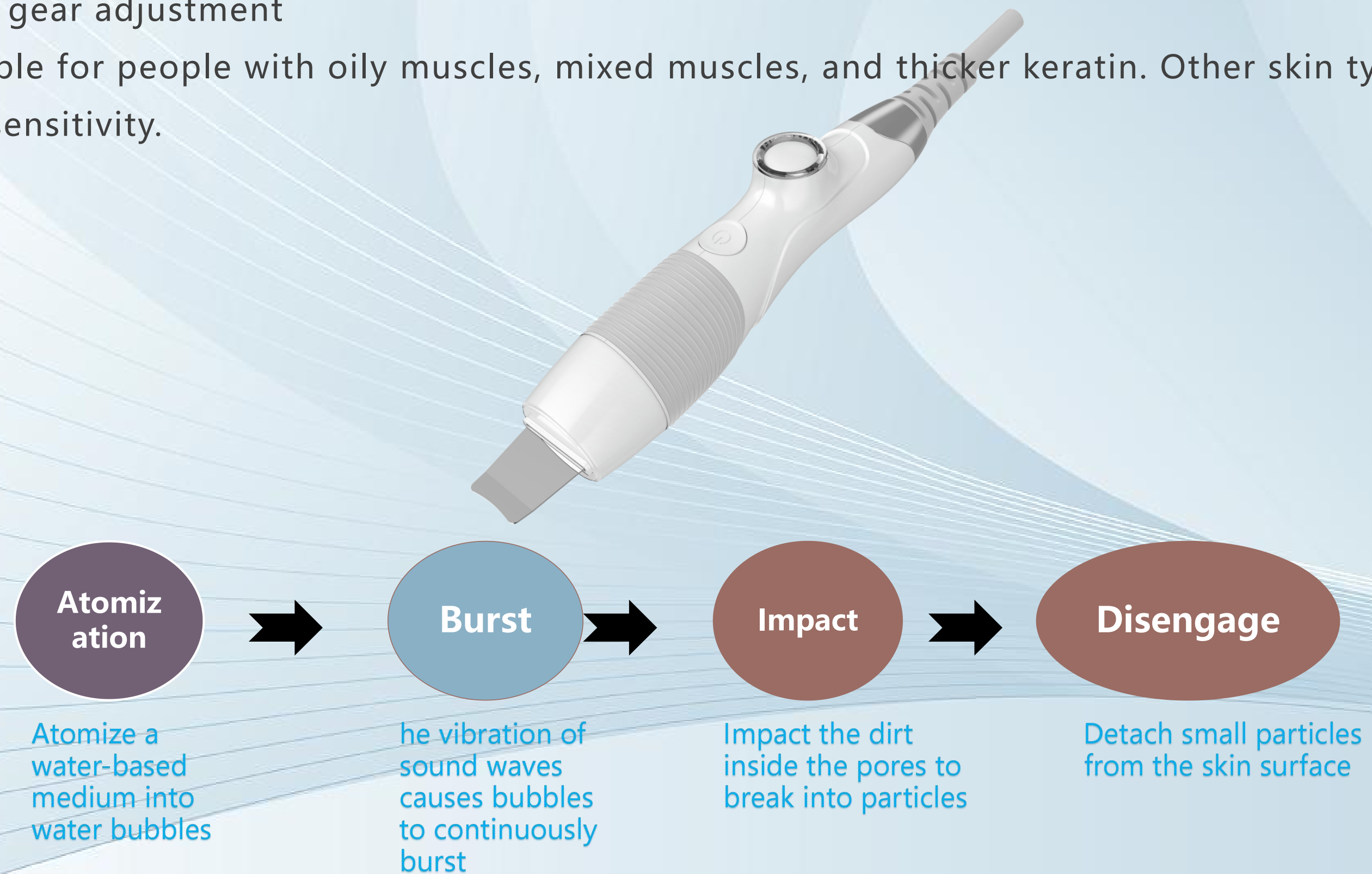


C. Sonic cleansing handle

Grading and typing

Remove old and waste keratin

- ❑ Using the vibration principle of ultrasound, water is instantly atomized, causing dirt in pores to burst and removing old and waste keratin.
- ❑ The rounded concave arc design conforms to the facial contour curve, improving cleaning comfort.
- ❑ Multi gear adjustment
- ❑ Suitable for people with oily muscles, mixed muscles, and thicker keratin. Other skin types are not suitable to effectively avoid exacerbating skin sensitivity.



D. Sonic wave hook handle

Partition

Cleaning of small parts such as the nose

The slender hook design makes it easier to clean small areas such as the nasal wings, avoiding discomfort and skin damage caused by excessive compression.

Super high frequency vibration is applied to the head to effectively loosen the links between keratinocytes, separate dead cells, and discharge white and black heads from pores

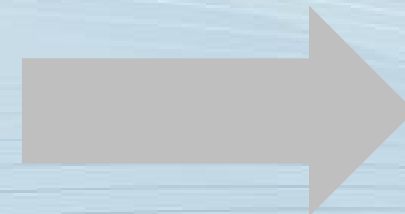
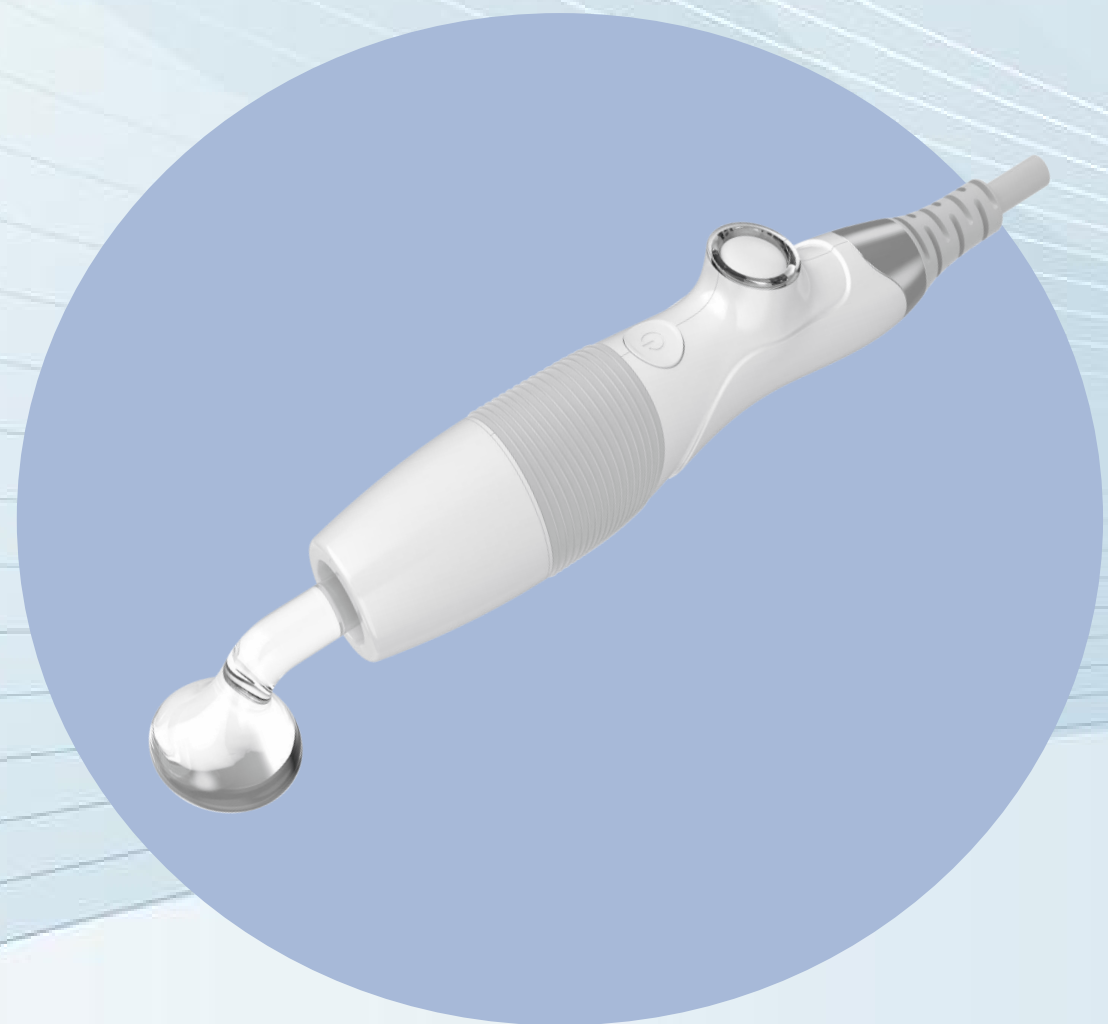


E. Ozone ion handle

Somatotype

Antibacterial repair, improve oily and acne prone muscles

- ✓ High frequency microcurrent is generated through a glass electrode tube. After contact with the skin, the microcurrent of the glass tube ionizes with oxygen in the air, producing ozone.
- ✓ Utilize ozone to target the characteristics of oily skin that are prone to bacterial growth for antibacterial care, reducing the growth of harmful bacteria and the recurrence of acne.
- ✓ Improve acne skin, unblock pores, fade acne marks, and tender and tighten the skin.



F. Ice Pole handle

Convergence • Redness Reduction

Calm and soothe, improve sensitivity, and astringe pores

- ✓ The Ice Pole handle utilizes the principle of a refrigerator, using special chips to absorb energy and achieve instant cooling effects.
- ✓ Under low temperature stimulation, it causes rapid shrinkage of pores and improves the phenomenon of enlarged pores.
- ✓ Calm and reduce redness, alleviate sensitivity, and improve the phenomenon of local redness on the skin after cleaning.



Calm and reduce redness

Improve redness caused by cleaning



Elastic skin

Increase skin elasticity



Pore refining

Promoting pore shrinkage through ice application



Alleviate sensitivity

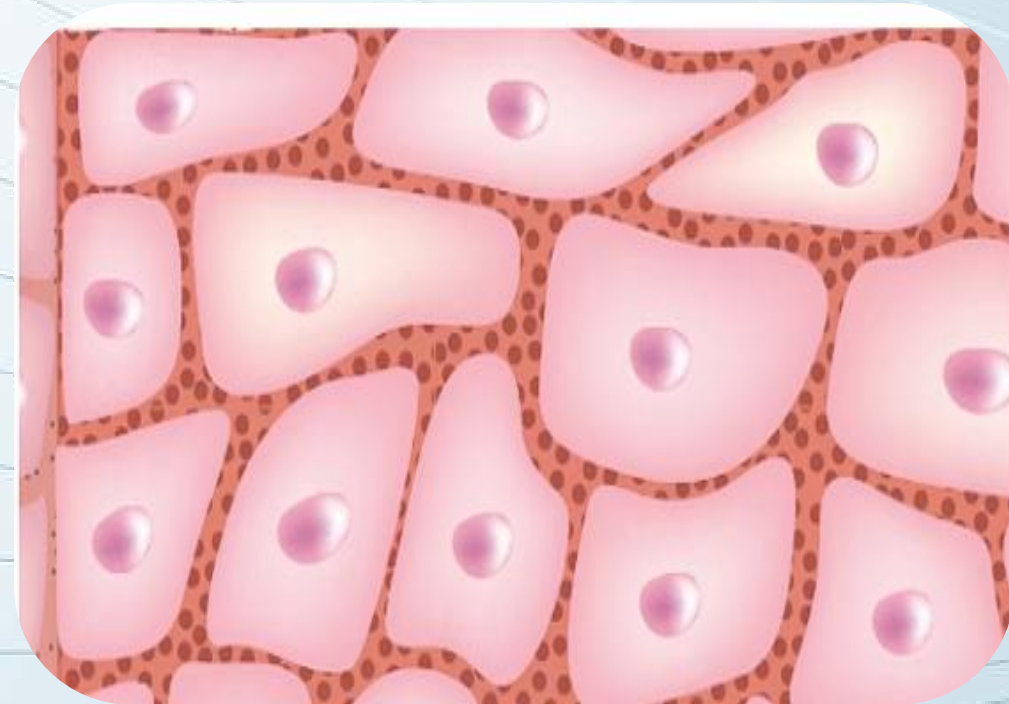
Quickly improve redness, pain, swelling, and itching caused by allergies



G Eye care handle Anti Aging Somatotype

Eye anti-aging and soothing

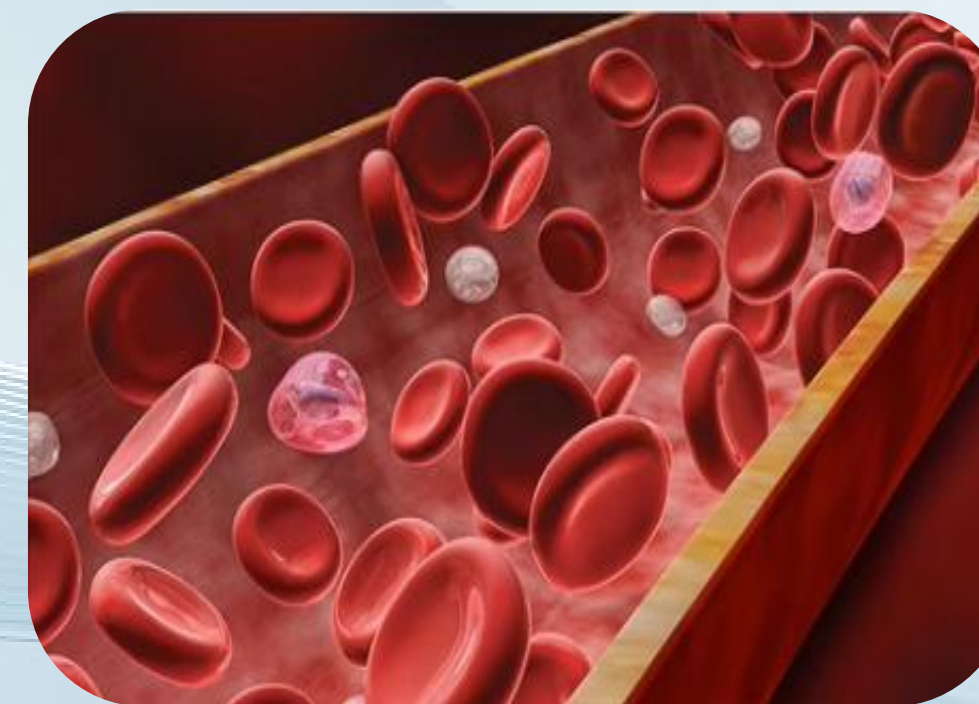
- ✓ Utilizing the warming effect to activate collagen,
- ✓ Repair broken fibrous tissue cells and fade fine lines around the eyes
- ✓ Promote eye blood circulation, improve eye fatigue, and fade Periorbital dark circles
- ✓ Accurately exercise the Orbicularis oculi muscle to enhance the elasticity and contour around the eyes
- ✓ Adjustable duration design, which can reduce the nursing time for sensitive skin



Enhancement - periocular elasticity



Activation Collagen Regeneration



Promoting periocular microcirculation

H. Facial care handle Typing, anti-aging, thermal conductivity

Facial tightening and enhancement

- Stimulate the peptide chain reorganization of collagen fiber in the form of fever, and the Elastic fiber immediately shrinks to activate collagen regeneration.
- Activate collagen, enhance firmness, and fade lines
- Thermal effect accelerates skin blood circulation and effectively promotes product absorption, which can be used as thermal conductivity care for products
- The humanized design with adjustable duration can be freely selected according to the tolerance level of different skin types



Enhance firmness



Fade lines



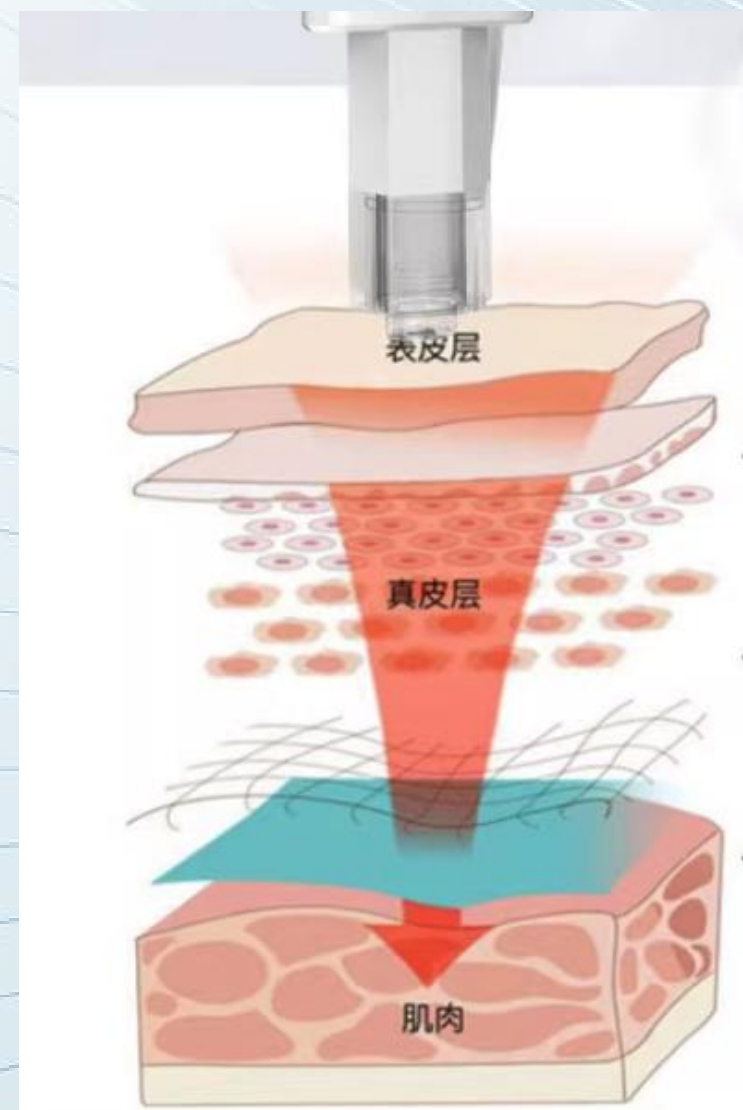
Activate collagen



I. Multi effect microcrystalline handle Typing and Skin Separation







Transdermal introduction to promote absorption

- ✓ Using nanoscale chip contacts to open up skin absorption channels, nutrients penetrate the skin's brick wall structure, promoting nutrient penetration and absorption.
- ✓ It can be used for polishing, repairing acne, shrinking pores, whitening and brightening skin, moisturizing, firming and anti-aging.
- ✓ Routine settings for sensitive skin are not available to avoid improper operation without understanding the physiological characteristics of the skin, which can exacerbate skin sensitivity reactions
- ✓ This handle can be selected in free mode (for professional operators)



Nutrient directly reaches the bottom of the skin to awaken skin vitality

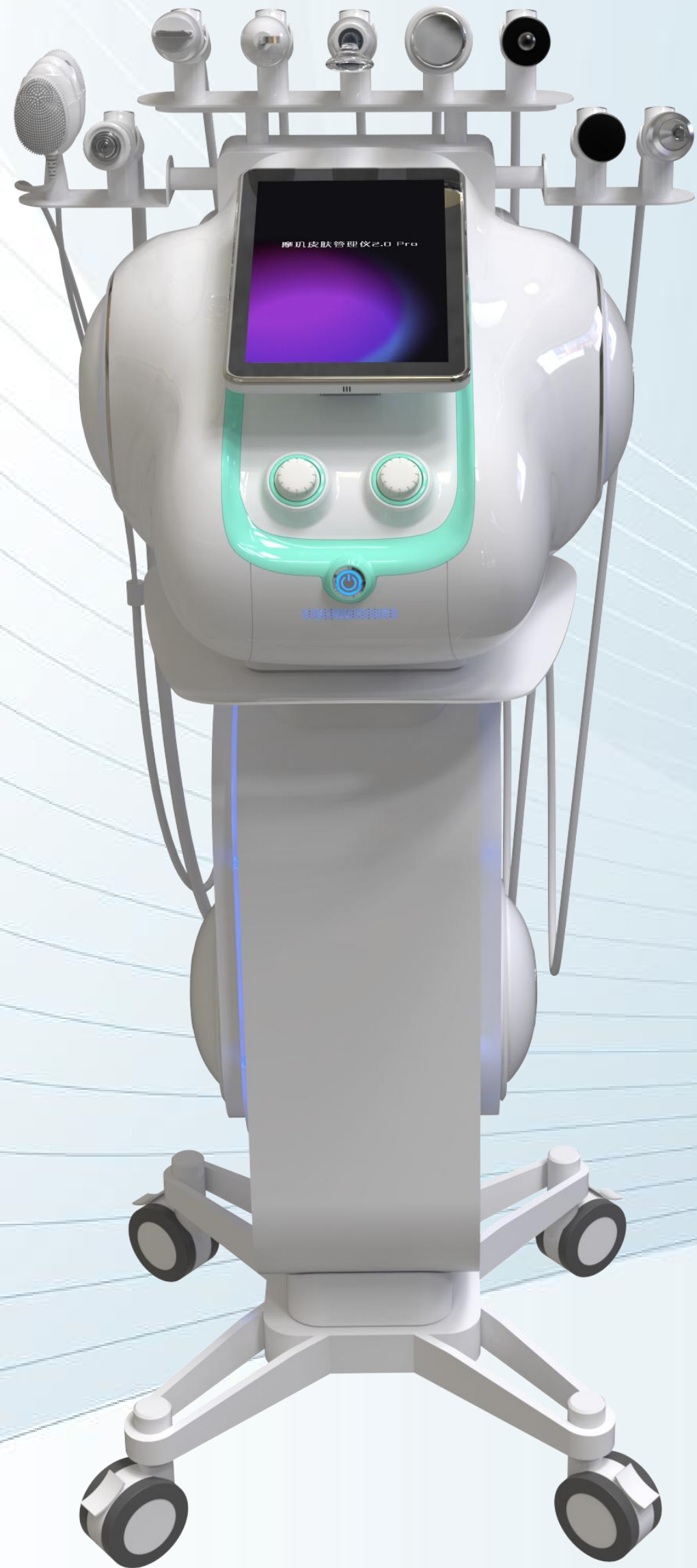


					
无痛无创 Painless non-invasive	水光导入 Above the import	淡斑去印 Pale spot toprint	深层保温 The deep moisturizing	细腻毛孔 fine pores	抚平纹路 Smooth lines

Convenient

Do you often worry about having too many instruments and handles to match the project?

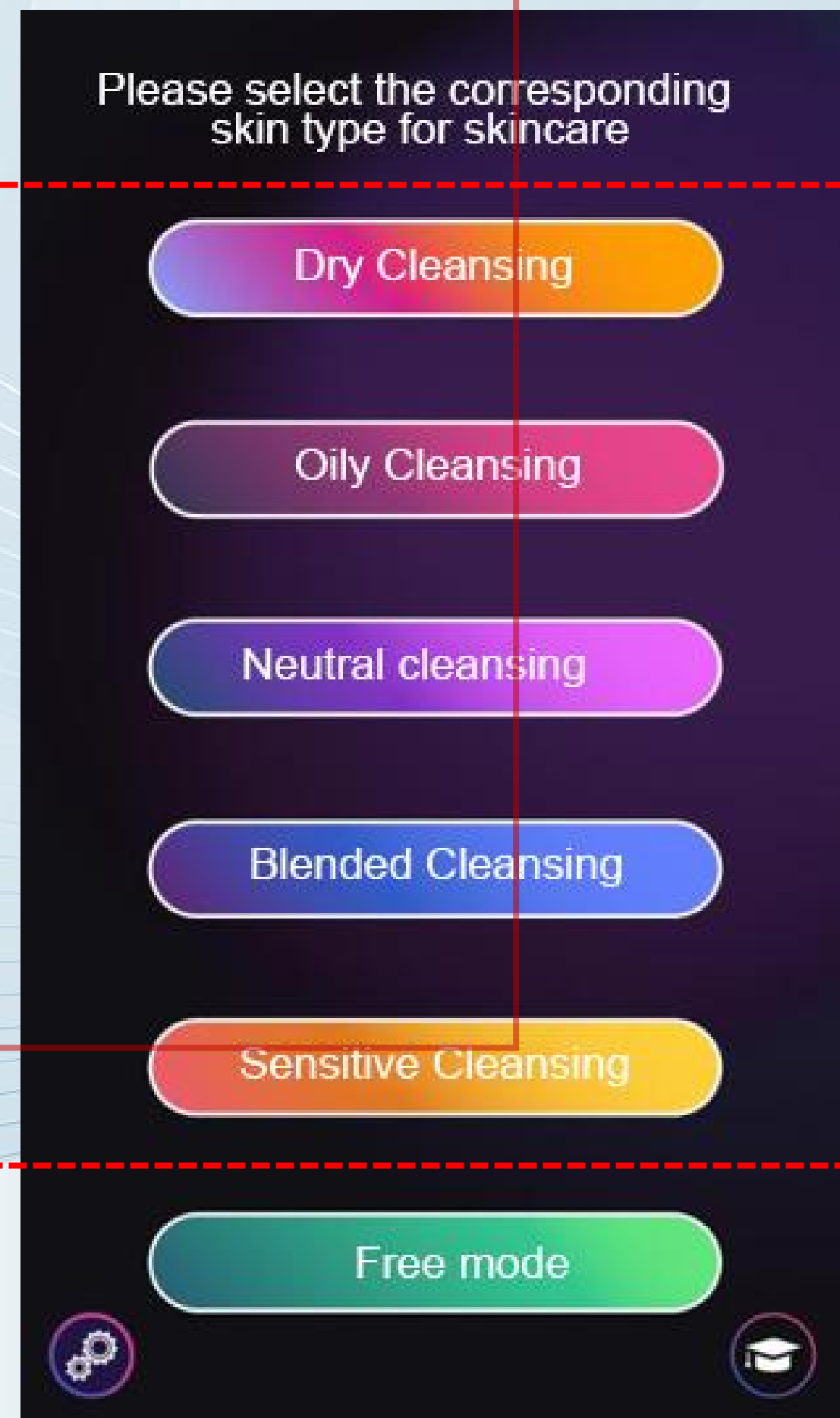
Do you also have a headache that the project process is too single?



One machine guidance

- Full screen guidance,
 - multiple modes of foolproof operation,
 - reducing educational costs and customer complaint rates
-
- Typing care screen settings
 - Free mode screen selection
 - One click view of project matching

Typing care screen settings



Project一

Dry skin care

Project二

Oily skin care

Project三

Neutral skin care

Project四

Blended skin care

Project五

Sensitive skin care

Type cleansing oil/Cleaning of mixed skin

- Multi frequency dual silicone handle



Cleansing Remove surface dirt

- Sonic cleansing handle



Exfoliate
Remove old and waste keratin

- Vortex water carving handle



Clear pores
Remove dirt from pores

- Sonic suspension hook handle



Dispelling blackheads
Clear nose blackheads

- Ice Extreme handle



Shrinking pores
Soothing and contracting pores

- Ozone ion handle



Antibacterial repair
Inhibiting bacteria and repairing acne skin

Type cleansing oil/dry/normal/sensitive skin cleaning

- Multi frequency dual silicone handle



Cleansing
Remove surface dirt

- Vortex water carving handle



Clear pores
Remove dirt from pores

- Sonic suspension hook handle



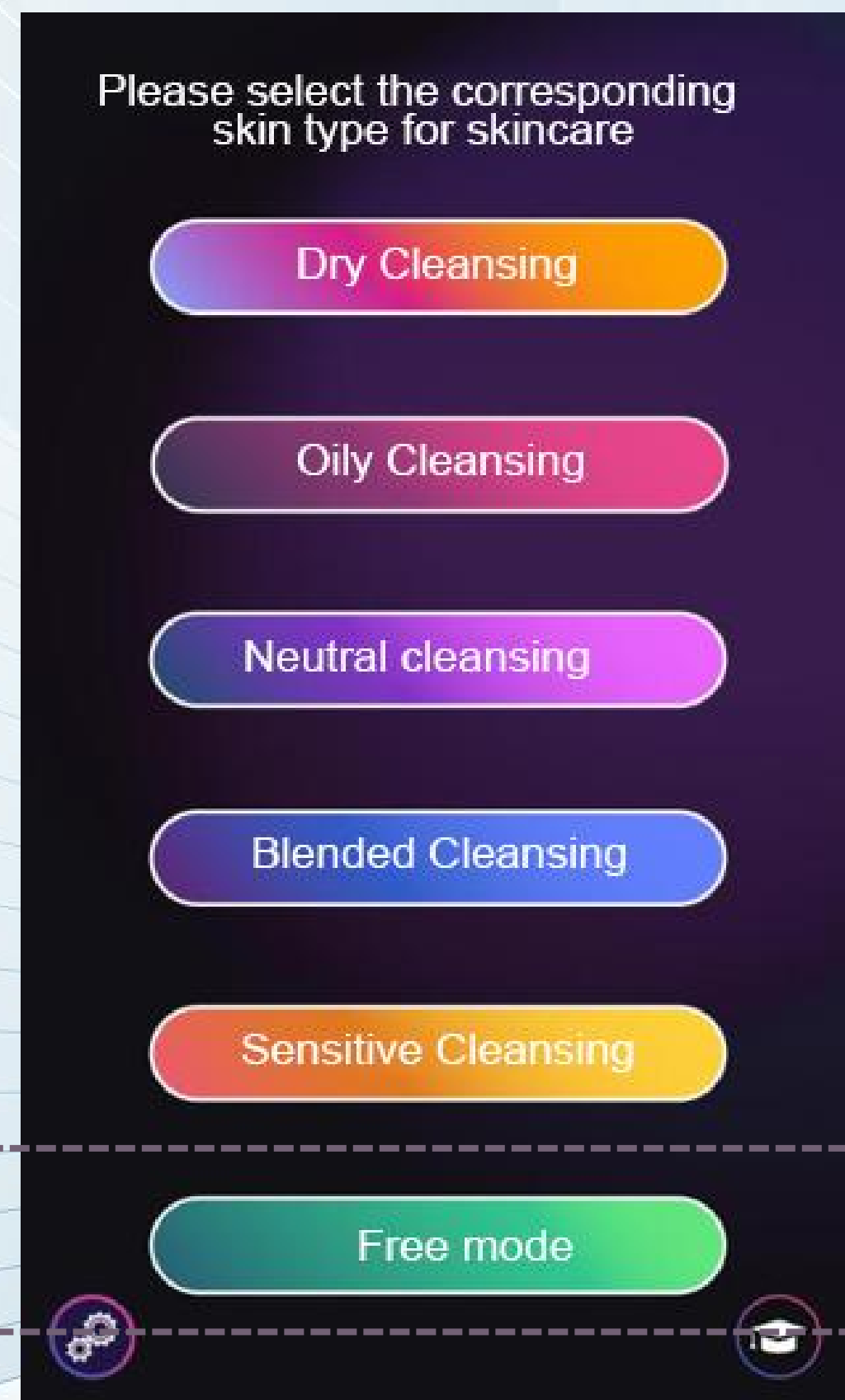
Dispelling blackheads
Clear nose blackheads

- Ice Extreme handle



Shrinking pores
Soothing and contracting pores

Free mode nursing screen setting



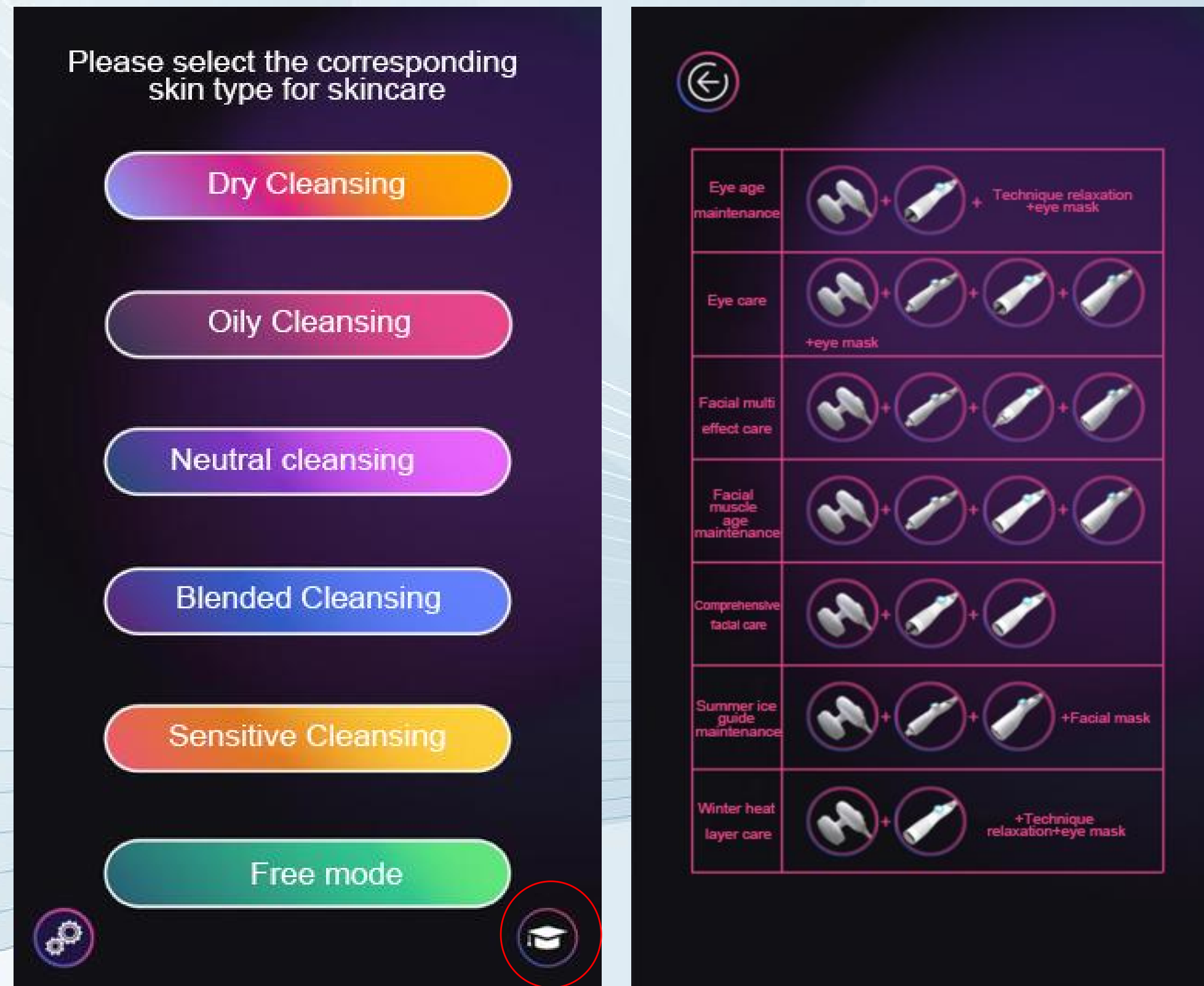
user-friendly design

You can freely choose to use functional handles according to your needs

Flexible and unrestricted combination

Recommended settings for project matching

Suggest setting up a one click view of project combinations without any hassle



Eye age maintenance



Dilute dry lines and fine lines around the eyes, enhance the contour around the eyes

Eye care



1. Multi frequency dual silicone handle

Cleansing
Remove surface dirt



2. Vortex water carving handle

Clear pores
Remove dirt from pores



3. Eye care handle

Eye Care
Anti aging and firming



4. Ice Extreme handle

Calming and soothing
Improve skin discomfort



5. Apply facial mask to eyes

Eye Soothing
Increase eye moisture

Fade Periorbital dark circles and improve eye fatigue

Facial multi effect maintenance project



1. Multi frequency dual silicone handle

Cleansing
Remove surface dirt



2. Vortex water carving handle

Clear pores
Remove dirt from pores



3. Multi effect microcrystalline handle

Transdermal induction
Deeply introducing nutrients



4. Ice Extreme handle

Calming and soothing
Improve skin discomfort

Deep hydration, repair acne marks and pits, shrink pores, whiten and brighten the skin, tighten and resist aging

Facial muscle age maintenance



1. Multi frequency dual silicone handle

Cleansing
Remove surface dirt



2. Vortex water carving handle

Clear pores
Remove dirt from pores



3. Facial care handle

Facial anti-aging
Tightness improvement



4. Ice Extreme handle

Calming and soothing
Improve skin discomfort

Activate collagen, fade lines, tighten and enhance, and refine facial contours.

Comprehensive facial care



**1. Multi frequency dual
silicone handle**

Cleansing
Remove surface dirt



2. Eye care handle

Eye Care
Anti aging and firming



3. Facial care handle

Facial anti-aging
Tightness improvement

Activate collagen, fade lines, tighten and enhance, refine eye and facial contours.

Summer ice guide maintenance



Dredging absorption channels, opening ion absorption channels, and cooling care

Winter thermal conductivity care



1. Multi frequency dual silicone handle

Cleansing
Remove surface dirt



2. Facial care handle

Promoting microcirculation
Accelerate product penetration



3. Ice Extreme handle

Calming and soothing
Improve skin discomfort



4. Match according to needs

Selectable
Anti aging essence such as Q10

Smooth absorption channels, promote microcirculation, improve product absorption, and warm and moisturize the skin

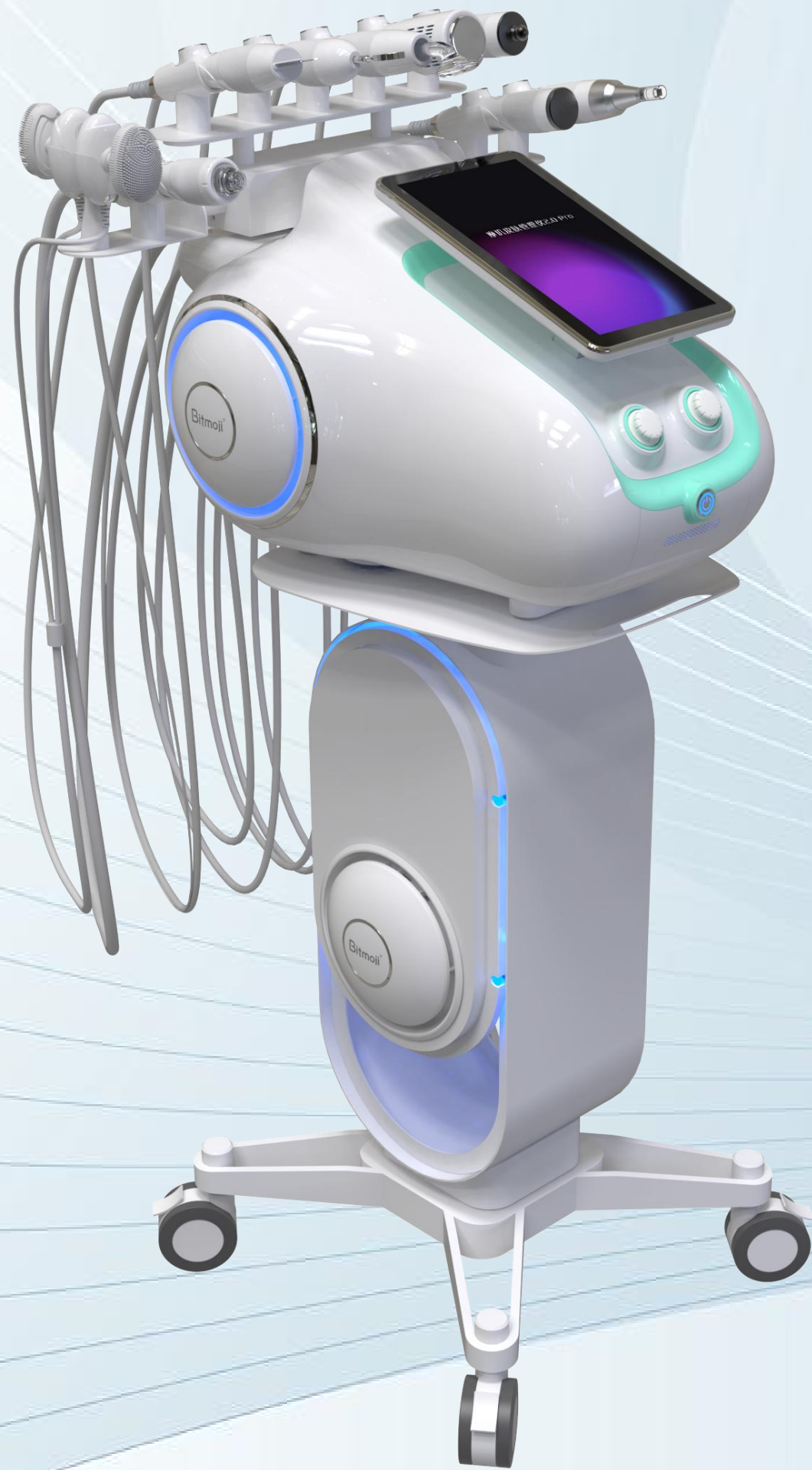
Display

Are you also worried about the appearance of the instrument not matching the store style?

Do you also have a headache? The equipment looks too cheap to afford project fees?

With the rise of online celebrity clocking in the era of network traffic, do you also want to have equipment with high appearance to meet the aesthetic requirements of women in the new era?

Design inspiration



Derivation and reconstruction of the form of a drop of water

Women are made of water, with the highest proportion of water in their skin. Their skin should be hydrated

Drawing inspiration from spacecraft portholes and flight tails

The power of technology, using technology to make impossible possible

The combination of the two means: lead technology create beauty!

The extraction and combination of curved elements exude cute and lively elements

Women's playfulness and agility

Design inspiration

The full and round surface shape combined with the light and shadow generated by the UV process highlights the product's texture



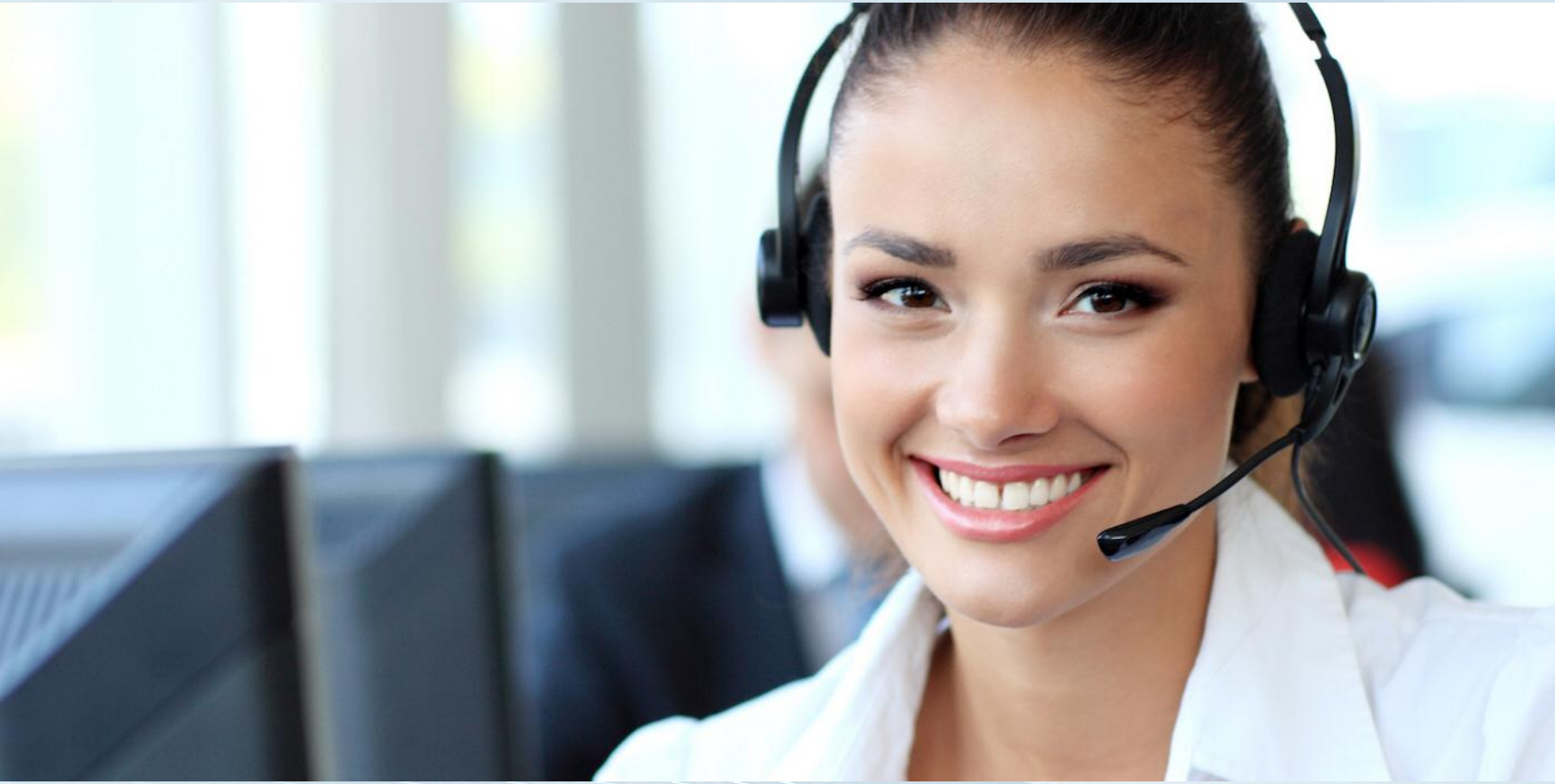
Scene display





— Our Service —

Our Service - Guarantee



Source manufacturer

After-sale repairing

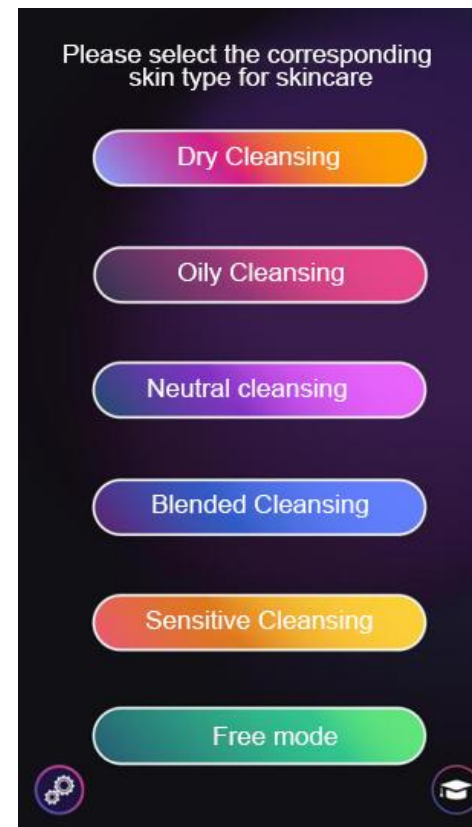
After sales online customer service



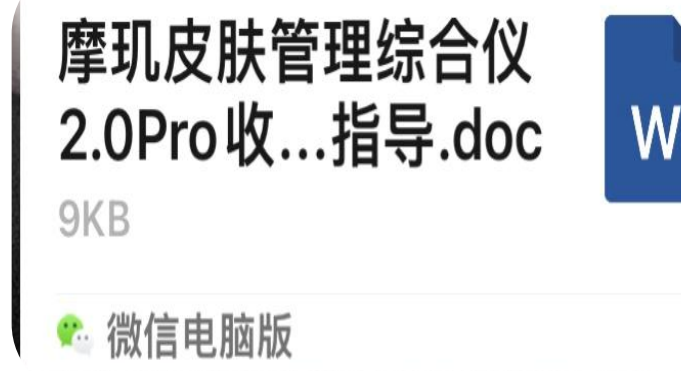
Our Service - Convenience



Multi language



System comes with project matching



operation instruction

Domestic initiative

Our Service - Convenience



Educational courseware



Teaching videos



live broadcast

Precautions for use

- ❑ Check if the product is sufficient before use (with a cleaning solution of over 200ml)
- ❑ Please ensure that the face is sufficiently moisturized when operating the Sonic Cleansing handle
- ❑ The number of handles varies for each skin type, please choose the corresponding skin type according to your needs

- ❑ Please pour out the wastewater in a timely manner after use to prevent the instrument from stopping working due to being full of water
- ❑ Please clean and disinfect the hand probe promptly after use
- ❑ Place the instrument in a ventilated, dry, and collision resistant location
- ❑ Non professional personnel are not allowed to disassemble the instrument arbitrarily



A skin management device with "temperature"

BITMOJI

Skin Management Integrator 2.0 pro